



EOEL Projects

And the activities that
will carry us through
2020-2021

*Early Learning Board
Dec. 10, 2020*

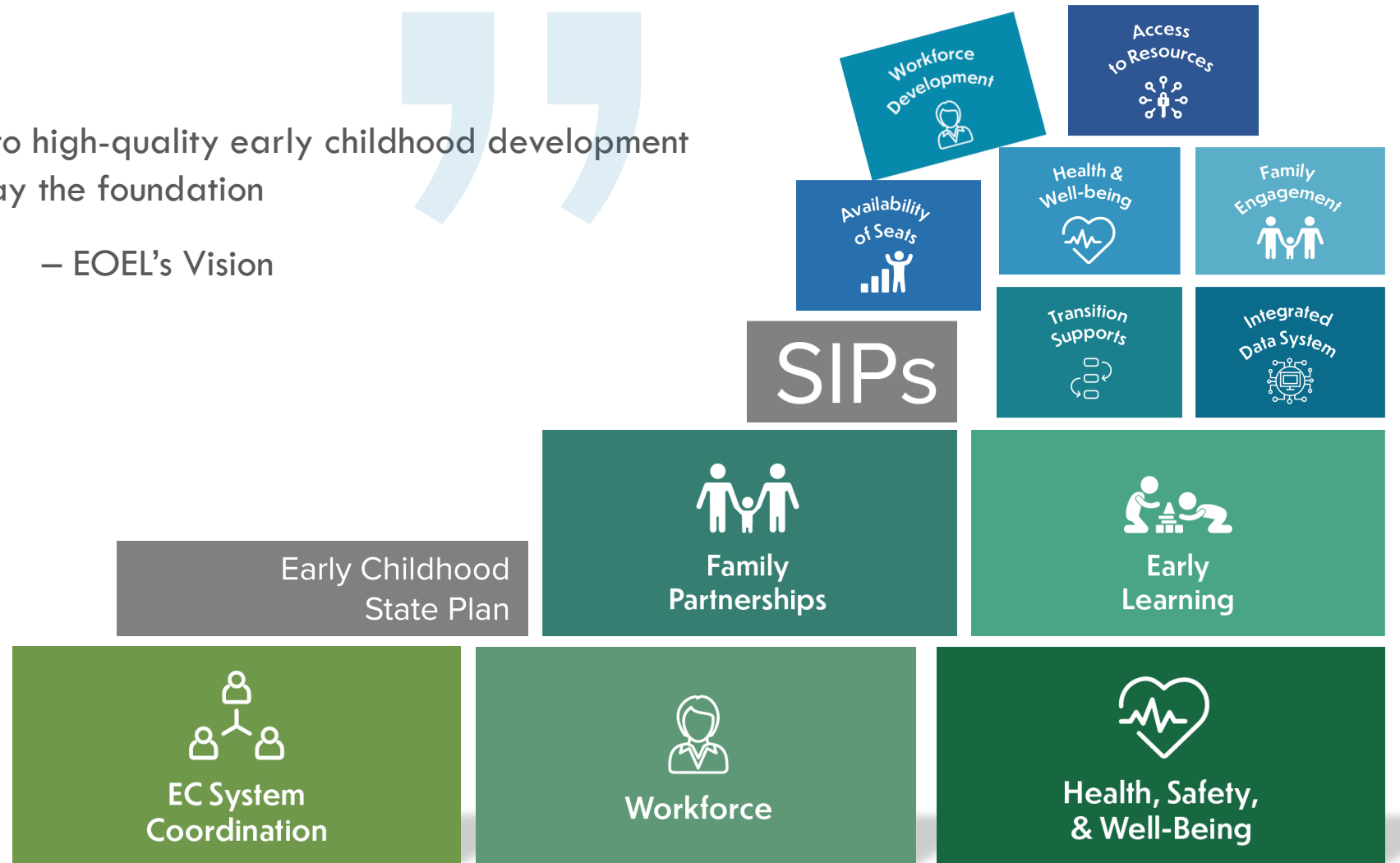


PROJECTS

Building a strong foundation

Every child in Hawai'i has access to high-quality early childhood development and learning experiences which lay the foundation for lifelong well-being.

– EOEL's Vision



Advocacy for Existing Programs and Services

Strengthen partnerships with legislators to secure their support in maintaining services as well as public funding/seats of all types for existing programs.

Strengthen partnerships with the private sector (e.g., funders, providers, and businesses) to integrate and acknowledge their efforts within the EC State Plan.

Maintain early care and education learning opportunities across the state.

SIPs



State Plan



Professional Learning

Coordinate with others who are implementing or funding public pre-k programs to ensure consistency in the quality of program standards, through the use of professional development and appropriate supports.

Provide early childhood education training to more teachers in the K-3 system to support P-3 alignment and continuity.

Provide public pre-k professional learning and support schools through the Early Learning Academy.

SIPs



State Plan



State Plan Review and Tracking

Work with the Early Learning Board (ELB) to establish a process to review and monitor progress of efforts associated with the EC State Plan and to make recommendations.

Facilitate the re-engagement process for champions of strategic implementation plans and provide support.

Make EC data more accessible within the work of the State Plan.

SIPs



State Plan



Workforce System Development

- Maintain communication with lead agencies regarding the status of workforce development initiatives/projects.
- Align our workforce development efforts with the national Power to the Profession: Unifying Framework.
- Create a website to support the development of Hawaii's EC Workforce (which contains information on pathways, programs which offer EC coursework, employment requirements, etc.).
- Promote the importance of workforce development as foundational to increasing access and availability and economic recovery with policy makers and funders.

SIPs



State Plan



Workforce System Development (cont.)

Develop initiatives to retain the current workforce.

Support the design and implementation of a compensation economic equity study.

Continue to work with higher education partners in support of the development of a career roadmap for professionals to advance their careers through increasing levels of education, experience, demonstrated competencies and compensation.

Support local efforts to align local and national standards for the early childhood intervention workforce using the Comprehensive Systems of Personnel Development (CSPD) framework.

SIPs



State Plan



Family & Community Engagement

Build out *earlychildhoodhawaii.com* website (as a companion to the EOEL website) to be family friendly, to connect families and professional to resources, and to provide research and policy information for those invested in the early childhood field.

Build out community newsletter.

SIPs



State Plan



Public Pre-K Program Implementation and Administration

Identify options and secure funding to maintain the EOEL Public Prekindergarten Program.

Increase rate of retention of EOEL Public Pre-Kindergarten Program educators.

Launch an online platform to support schools participating in the EOEL Public Prekindergarten Program through the ability to access resources, previously recorded professional learning sessions, and coaching logs.

Develop evaluation process for professional learning support.

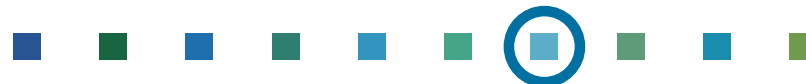
State Plan



Program Partnerships and Coordination

- Create Communities of Practice (CoP) of EC providers: CoP between Chaminade and EOEL focused on food access.
- Convene partners regularly (community and state agencies).
- Continue partnership between EOEL and DOE to strengthen educator knowledge base and practice related to early childhood education.
- Co-construct common set of competencies for instructional coaches.
- Continue ongoing coordination of and communication between PDG B-5 strategic implementation plan teams.
- Continue and strengthen relationships and partnerships with advocacy groups: HCAN, ECAS.

State Plan



Improving Family Access

Identify obstacles that prevent families from accessing existing early learning programs.

SIPs



State Plan



Support for Vulnerable and Underserved Populations

Collaborate with Head Start partners to improve the availability and quality of services for young children and families within vulnerable populations while reducing duplication, avoiding displacement, eliminating competition, and enhancing the efficiency of services.

SIPs



State Plan



Seamless Transition Practices

Finalize, print and distribute the updated Transition Toolkit to families and providers.

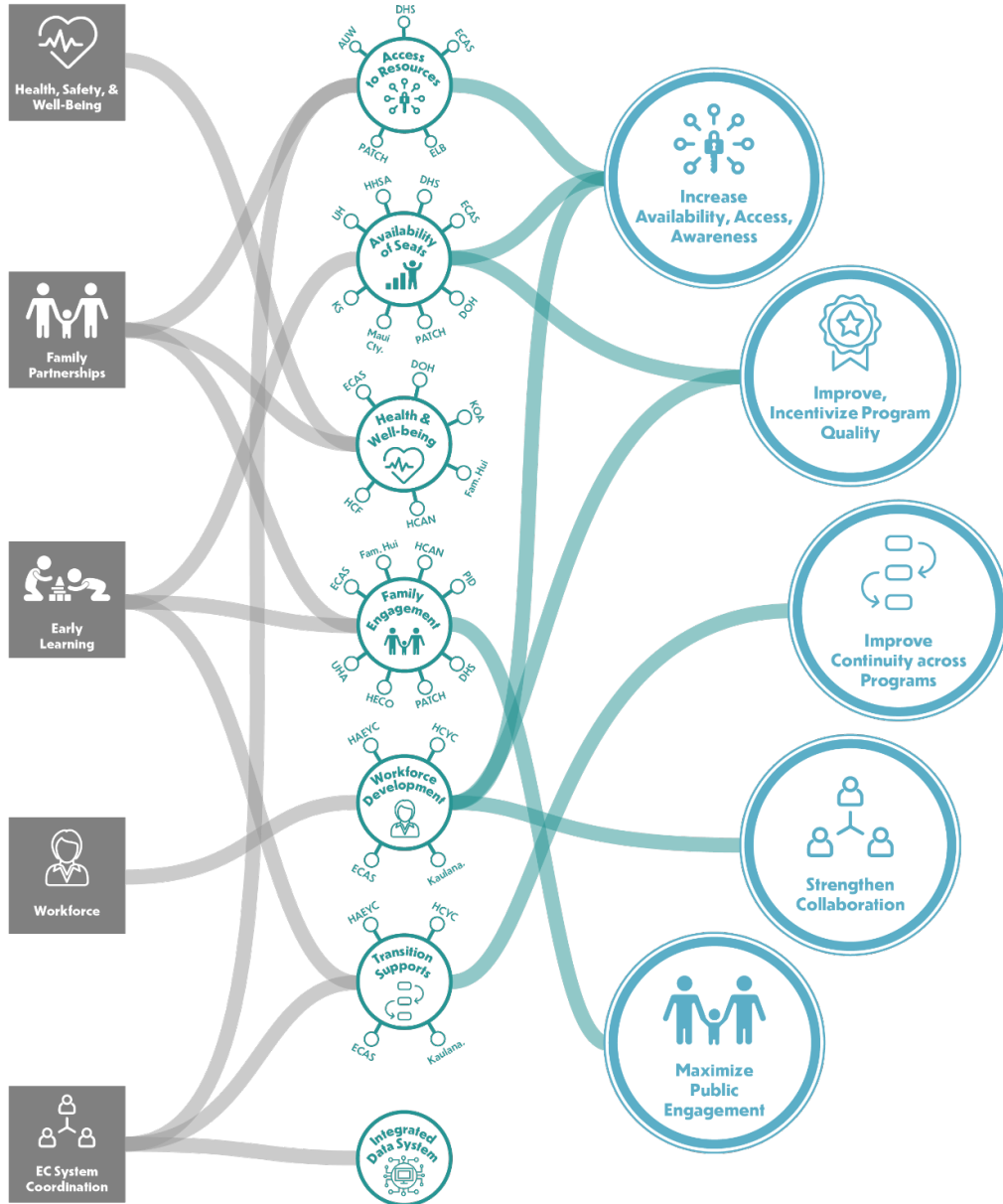
SIPs



State Plan



EOEL's Projects



- Advocacy for Existing Programs and Services
- Family and Community Engagement
- Professional Learning
- Program Partnerships and Coordination
- State Plan Review and Planning
- Improving Family Access
- Support for Vulnerable and Underserved Populations
- Workforce System Development
- Seamless Transition Practices
- Public Pre-k Program Implementation and Administration





M

A

H

A

L

O

