

# COUNTY-BASED EARLY CHILDHOOD INITIATIVES

---

Early Learning Board

Thursday, February 13, 2025

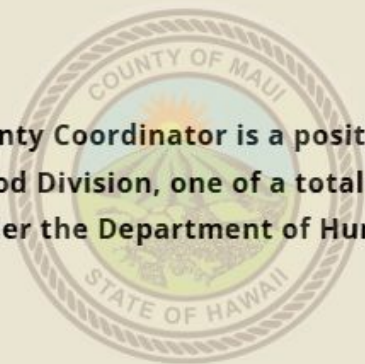
Hawai'i County - Angela Thomas

Maui County - Ka'ina Bonacorsi

Jordana Ferreira - City & County of Honolulu

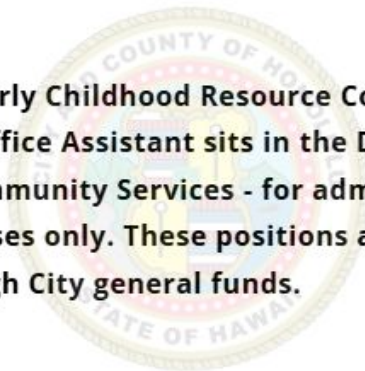
Alanna Souza - Kaua'i Planning & Action Alliance

## MAUI COUNTY



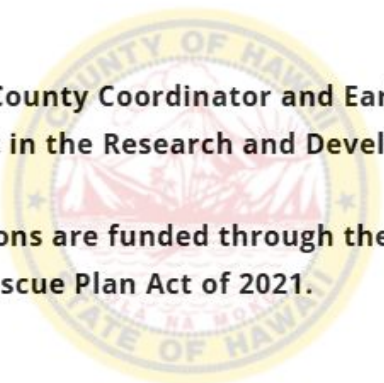
The Maui County Coordinator is a position within the Early Childhood Division, one of a total of seven divisions, under the Department of Human Concerns.

## CITY & COUNTY OF HONOLULU



The Early Childhood Resource Coordinator and Office Assistant sits in the Department of Community Services - for administrative purposes only. These positions are funded through City general funds.

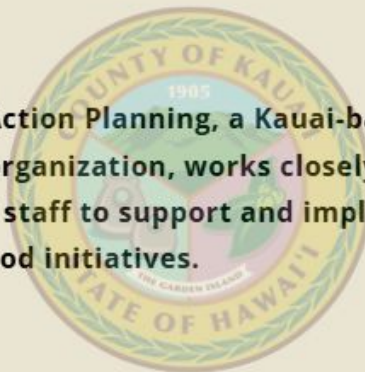
## HAWAII COUNTY



The Hawaii County Coordinator and Early Childhood Associate sit in the Research and Development office.

These positions are funded through the Federal American Rescue Plan Act of 2021.

## KAUAI



Kauai Action Planning, a Kauai-based non-profit organization, works closely with Kauai County staff to support and implement early childhood initiatives.

# OVERVIEW

## STATE AND LOCAL GOVERNMENT

---

The Hawai'i State Constitution grants counties "home rule"

- Counties have their own authority - they are not simply extensions of the State

State is governed by the Constitution and counties are governed by their own Charters

- State enacts Statute and counties create ordinances

Funding sources are different

- State is funded through GET, income tax
- Counties are funded through property taxes



# CHAPTER 11

## REVISED ORDINANCES OF HONOLULU

**It is the policy of the city to:**

- (1) Acknowledge the importance of affordable and accessible quality child care on the individual, the family, the workplace, and the community;
- (2) Take a positive and active role in the development and promotion of cooperative relationships among parents, employers, child care professionals, employee organizations, businesses, educators, community leaders, and government officials aimed at increasing the availability of accessible and affordable quality child care to working families in the city;
- (3) Become a model employer in the delivery of child care services to its employees;
- (4) Integrate the child care needs of citizens into the city's land use planning process;
- (5) Institute procedures to expedite the necessary approvals and permits required for the construction of child care facilities and for projects that include the construction of child care facilities;
- (6) Make vacant or underused city properties available to qualified child care providers;
- (7) Ensure that appropriate city personnel possess the requisite understanding of and familiarity with applicable legal, regulatory, and procedural requirements for quality child care programs;
- (8) Use the available resources of federal, State, and private agencies to enhance the availability of affordable quality child care on Oahu;
- (9) Support federal and State legislation that is consistent with the intent of this section;
- (10) Encourage all employers on Oahu to address the issue of child care in their employee policies;
- (11) Encourage all city vendors to adopt a stated child care policy. To the extent permitted by law, the city shall give vendors with such policies preference in contracting with the city;
- (12) Support efforts to offer a child care benefit option in any cafeteria plan, within the meaning of § 125, Internal Revenue Code of 1986, as amended, for city employees; and
- (13) Review the activities of the city in promoting the expansion of child care services in every annual report of the city published by the mayor pursuant to the charter.

**It also establishes a child care coordinator, within the Department of Community Services, for administrative purposes only.**

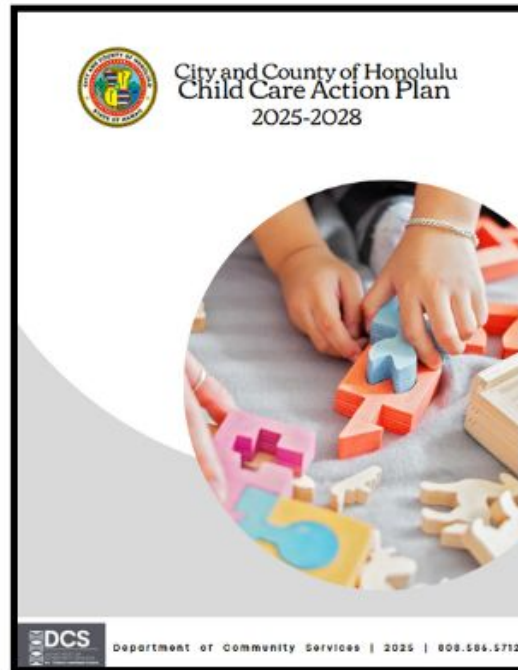
CITY & COUNTY OF HONOLULU'S

# CHILD CARE ACTION PLAN

The City is currently working to develop and implement a 3-year action plan.

**Our vision for O'ahu's families and keiki is grounded in the belief that strategic action today will lay the foundation for transformative change tomorrow.**


- A community-driven City plan
- Focusing on increasing access and affordability of child care and early learning opportunities



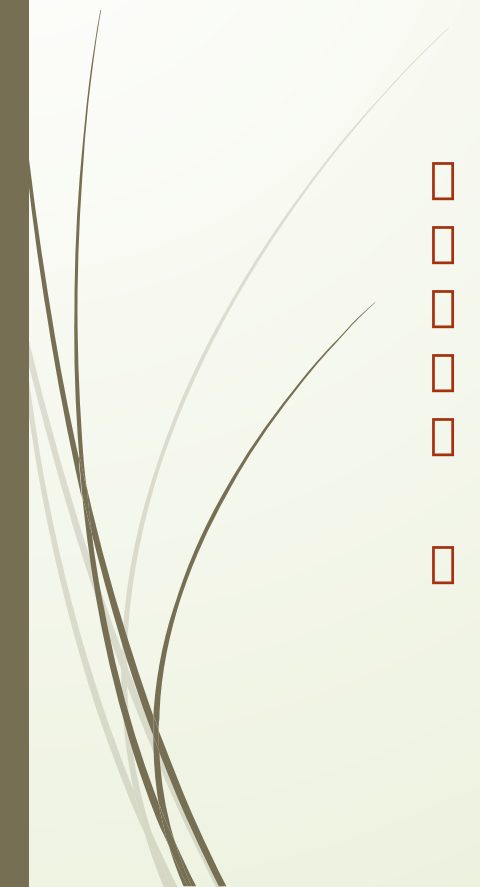


**MAUI COUNTY**  
**EARLY CHILDHOOD RESOURCE CENTER**

Version 2.6.2025



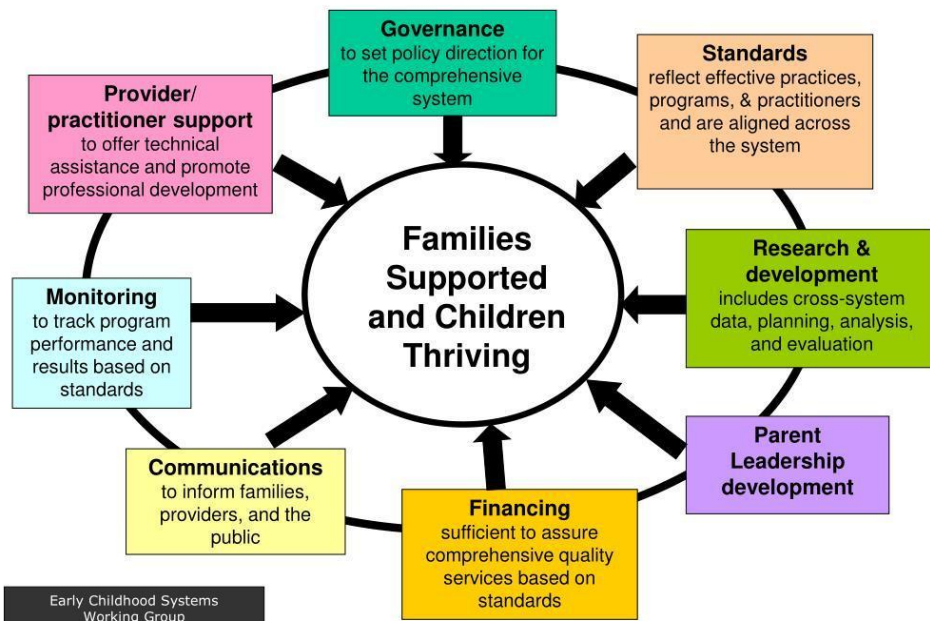
# Maui County Early Childhood Program Overview

- **Department:** Human Concerns
  - **Division:** Early Childhood Program
  - **Funding:** County General Funds
  - **Grant Allocation:** \$2,055,402
  - **Program Coordinator:** Over 18 years of dedicated service
  - **Role:** Single-division structure, managing and overseeing the distribution and utilization of Early Childhood grants within the county
- 

# EARLY CHILDHOOD DIVISION



## Core Elements of an Early Childhood Development System







# Program Description

The Early Childhood Resource (“ECR”) Program seeks to improve enhance, and sustain the availability, affordability, and quality of early care, learning, and development services in Maui County. Through collaboration, the ECR Program supports the development and implementation of a coordinated system of early childhood services for young children from birth to eight years old in Maui County.

## Population Served

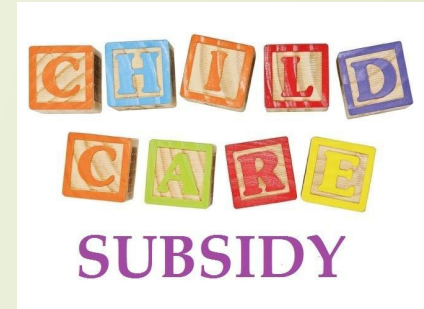
This program serves both providers and families engaged in meeting the needs in early childhood care and learning in Maui County, specifically for children ages prenatal to kindergarten.



# Early Childhood Grant Highlights

Grants Supporting Families with Young Children so Parents can Work:

- ❖ County Early Childhood Subsidy Program
- ❖ MEO Headstart After School and Summer
- ❖ MFSS Early Head Start



Grants Supporting Quality & Early Childhood Workforce Sustainability

- ❖ PATCH Early Childhood Workforce Sustainability



# Early Childhood Grant Highlights

## Grants Supporting Parent Engagement & On Track Child Development:

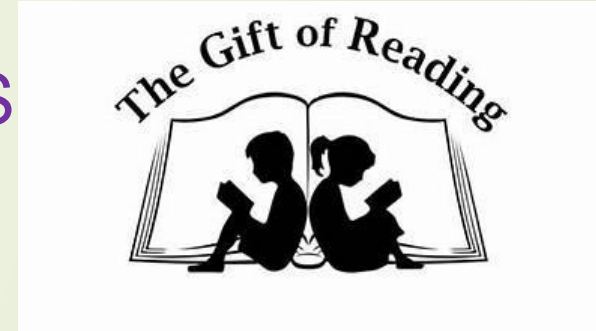
- ❖ PID Tutu & Me Program
- ❖ Imua Family Services Early Childhood Development Program
- ❖ MFSS Kane Connections Fatherhood program
- ❖ Family Hui Peer Connections
  
- ❖ MFSS Early Childhood Literacy Programs
  - ❖ Reach Out & Read
  - ❖ Imagination Library
  - ❖ Early Childhood Resource Center Lending Library





# FAMILY SUPPORTS

# LITERACY



# EARLY CHILDHOOD WORKFORCE DEVELOPMENT



# EC Literacy

MCECRC Family Early Literacy program strives to increase families' access to high quality children's literature, including:



In partnership with the County of Maui

**Reach Out & Read**



**Children's Books Lending Library:**  
Ka Hale Waihona Puke No Nā Kamali'i



**Imagination  
Library**



# County of Maui Imagination Library

## Started October 2023

In response to the Maui wildfires of August 2023, IL was made a priority by our team to service our Lahaina community

## As of January 2025

# 2,647

registrations

## Grassroots efforts & partnerships

Initiatives & strategic partnerships ignited a movement full of awareness & sensitivity to our island community

# Book Extenders

## TAD and DAD



### ACTIVITY IDEA FOR TAD AND DAD

WRITTEN & ILLUSTRATED BY DAVID EZRA STEIN  
BEST SUITED FOR TODDLERS  
AGES 1-3 YEARS OLD

Tad the tadpole spends every day with his dad and shares a lily pad with him at night. It's always been that way . . . but little Tad is growing up, and quickly becoming as big and awesome as his dad. As his new parts sprout, he's learning to swim and hop and croak just like Dad.

#### SPLASH LIKE TAD

##### MATERIALS NEEDED:

- A bucket
- Small items that can get wet

##### DIRECTIONS:

- Fill the bucket with water and place it outdoors.
- Challenge your child to see who can make the biggest splash.
- Take turns throwing items in the bucket to see who makes the biggest splash.

READ ALOUD LINK



If you have any questions, please contact our Otisna Readers office at 906.647.1100.

**SAFETY ALERT:** Never take your eyes off your child while playing with a container of water.

ACTIVITY SHEETS ARE CREATED  
IN PARTNERSHIP WITH LEARNING  
TO GROW PROJECT

## TAD and DAD



### ACTIVITY IDEA FOR TAD AND DAD

WRITTEN & ILLUSTRATED BY DAVID EZRA STEIN  
BEST SUITED FOR PRESCHOOLERS  
AGES 3-5 YEARS OLD

Tad the tadpole spends every day with his dad and shares a lily pad with him at night. It's always been that way . . . but little Tad is growing up, and quickly becoming as big and awesome as his dad. As his new parts sprout, he's learning to swim and hop and croak just like Dad.

#### JUMPING CHALLENGE

##### MATERIALS NEEDED:

NONE

##### DIRECTIONS:

- Have a jumping challenge with your child.
- Introduce your child to the different types of jumps: hopping with two feet, hopping on one foot, leapfrog, tuck, bunny hop, etc. You and your child can also create your own jumps.

READ ALOUD LINK



If you have any questions, please contact our Otisna Readers office at 906.647.1100.

ACTIVITY SHEETS ARE CREATED  
IN PARTNERSHIP WITH LEARNING  
TO GROW PROJECT

## TAD and DAD



### ACTIVITY IDEA FOR TAD AND DAD

WRITTEN & ILLUSTRATED BY DAVID EZRA STEIN  
BEST SUITED FOR INFANTS  
AGES 6 TO 12 MONTHS

Tad the tadpole spends every day with his dad and shares a lily pad with him at night. It's always been that way . . . but little Tad is growing up, and quickly becoming as big and awesome as his dad. As his new parts sprout, he's learning to swim and hop and croak just like Dad.

#### MIRROR, MIRROR

##### MATERIALS NEEDED:

- infant-safe mirror

##### DIRECTIONS:

Look in the mirror with your child and point out the similarities and differences between you and him. For example: "There is your nose and here is my nose. You are growing to look just like me."

READ ALOUD LINK



If you have any questions, please contact our Otisna Readers office at 906.647.1100.



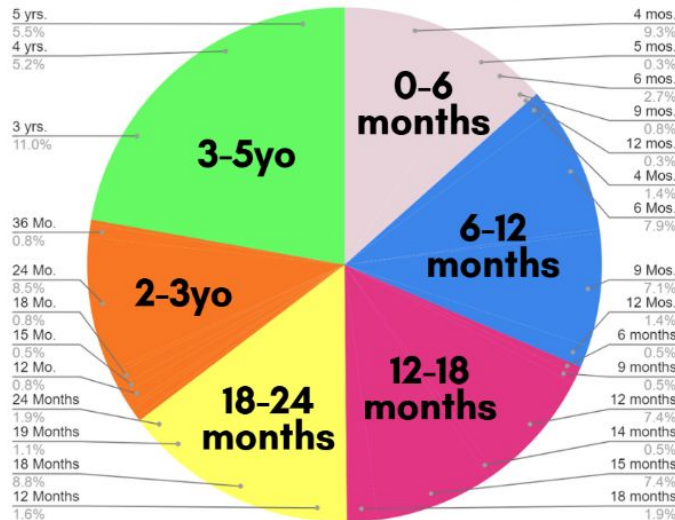
ACTIVITY SHEETS ARE CREATED  
IN PARTNERSHIP WITH LEARNING  
TO GROW PROJECT

# Reach Out & Read

EVERY  
MONTH  
**2,500**

Books to Medical  
Providers

## Current Stats



data from Kaiser Maui Lani - Jan. 2024



# LENDING LIBRARY

EASY WORDLESS BOOKS



**MAUI COUNTY**  
EARLY CHILDHOOD RESOURCE CENTER

## Only digitized lending library in the state

- Exclusive access to child care providers & community preKs

## Books include:

- Soft cover and Board books for ages Birth to age 5
- Fiction & Non-Fiction
- Hawaiiana: Fiction & Non-Fiction Books
- Duo-language Books



MAUI COUNTY  
EARLY CHILDHOOD  
RESOURCE CENTER

LET US BE YOUR ONLINE

## CHILDREN'S LIBRARY



BORROW BOOKS FOR  
CHILDREN 0-5 YEARS



### WHAT WE DO?

We offer a wide selection of books for infants though pre-kindergarten. Explore soft book covers and board books on:

- Hawaiian Nonfiction and Fiction
- Easy Reading Nonfiction and Fiction
- Big Book Activity Sets
- Duo-Language Fiction
- Social Emotional Learning
- Professional Development
- Themed Books

### 2 WAYS TO ORDER:



Online and pick up from ECRC



Ask for delivery service to your site

### REGISTER HERE

Link: <https://bit.ly/2m1t61Q>

MCECRC Lending Library New  
Borrower Contact Information



or scan QR code



OVER 5,000 BOOKS FOR KEIKI

### OPEN TO MAUI PROVIDERS

Including:

- Licensed Family Child Care Providers
- Group Home Providers
- Preschool Center Staff
- Infant Toddler Center Staff
- Early Childhood Home Visitors
- Traveling Preschool Staff



### DESTINY DISCOVER'S ONLINE LENDING LIBRARY

Several search engines available to find book topics. See recently added books and get quick access to the Learning Resources

- Nā Waiho'olu'u "Colors Song"
- National Geographic
- Ke Kino
- PBS Kids
- and much more

### FOR MORE INFORMATION

✉ [nitah.ecrc@gmail.com](mailto:nitah.ecrc@gmail.com)

☎ P. (808) 242-1508  
F. (808) 868-0402

📍 2099 Wells St., Wailuku, HI 96793

🕒 Hours of Operation: 8:00a-4:00p



# Lending Library



**registered  
childcare  
providers**

*Current Stats*

**3,524 Book Titles**

**4,886 Book Copies**

*Main Goal*

**register at least 60 patrons in  
total by the end of June 2024**



## CHILD DEVELOPMENT ASSOCIATE CERTIFICATION **CDA**

### MauI County Candidates

CDA pilot program aims to support high school students & new recruits in the ECE field.

#### **PATCH provides:**

- 120 self-paced online training
- 480 hours of practicum experience
- Portfolio Assistance
- Waived application fee
- CDA books and materials
- 1:1 mentorship



### Networking

Childcare providers who have access to community and educational resources are better equipped to lay a strong foundation for children in their care

### Technical Assistance

Ongoing assistance to help providers. Topics include funding, scholarships, advocacy, health & safety,

### Coaching

Practice-based Coaching helps programs identify needs, establish staff goals, and outline action steps

### Stipends

Financial support is provided for UHMC EC practicum students, EC conference registrations, providers supplies and materials.

# Real Property Tax Exemption



**County of Maui**  
Department of Finance  
**Real Property Assessment Division**  
**Child Care Facilities Exemption**

Real property used for the operation of a child care home, day care home, nursery, babysitting service, or other like child care facility is exempt from property taxes to the extent provided below if the child care provider operating the facility has been licensed by the State Department of Human Services for one year or more and is actually and actively engaged in providing child care services in the facility, and the facility conforms with zoning

- ✓ The child care facility is totally exempt if the value of the property is \$200,000 or less.
- ✓ If the value of the property exceeds \$200,000, the exemption is \$200,000.
- ✓ Claim for home exemption not required.
- ✓ Exemption must be renewed annually; on or before the December 31<sup>st</sup> filing deadline.

## How to Apply:

1. Go to [mauipropertytax.com](http://mauipropertytax.com)
2. Click on "Forms"
3. Select the "Child Care Facility Exemption Application" OR SCAN THE QR CODE

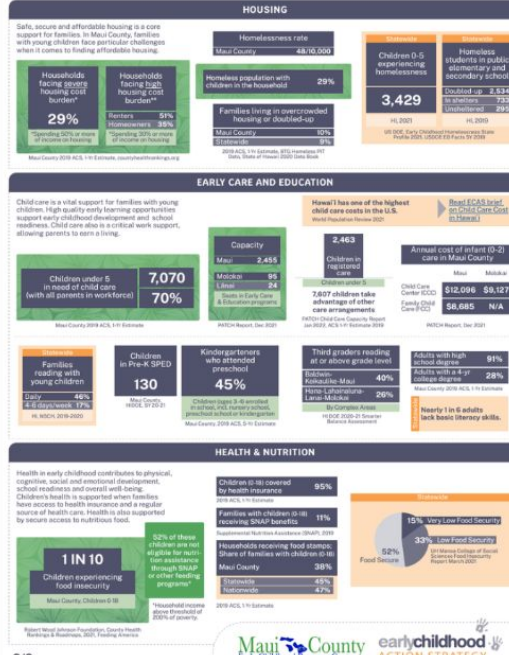
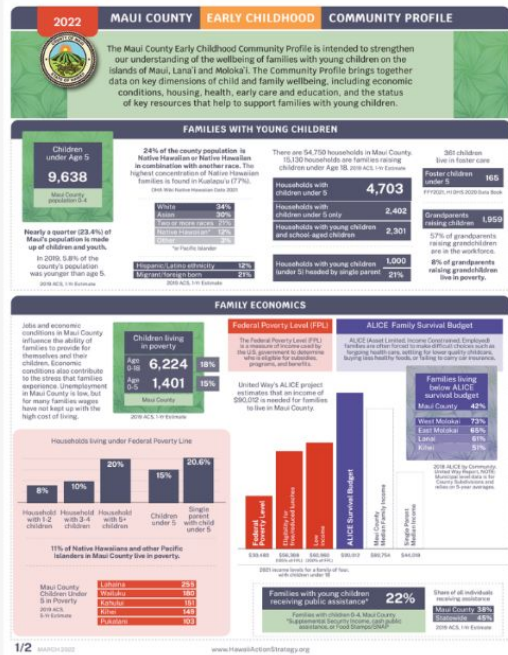




# Maui Wildfires



# Community Profile



For the Full Profile  
SCAN THE QR CODE



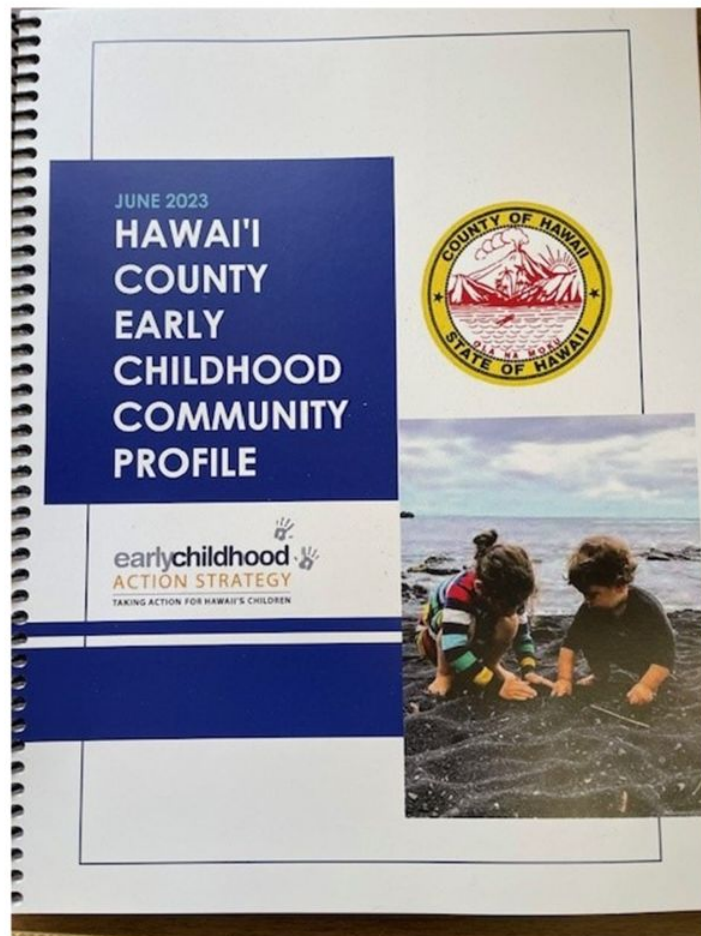


# Strategic Plan COMING SOON !

## Community Advisory

- \*\* Literacy Advisory
- \*\* Subsidy Advisory
- \*\* Community Events
- \*\* Training Collaborative (coming soon)
- \*\* ECEFR Collective
- \*\* FCC Advisory (In development)
- \*\* Directors Group (Under Redesign)

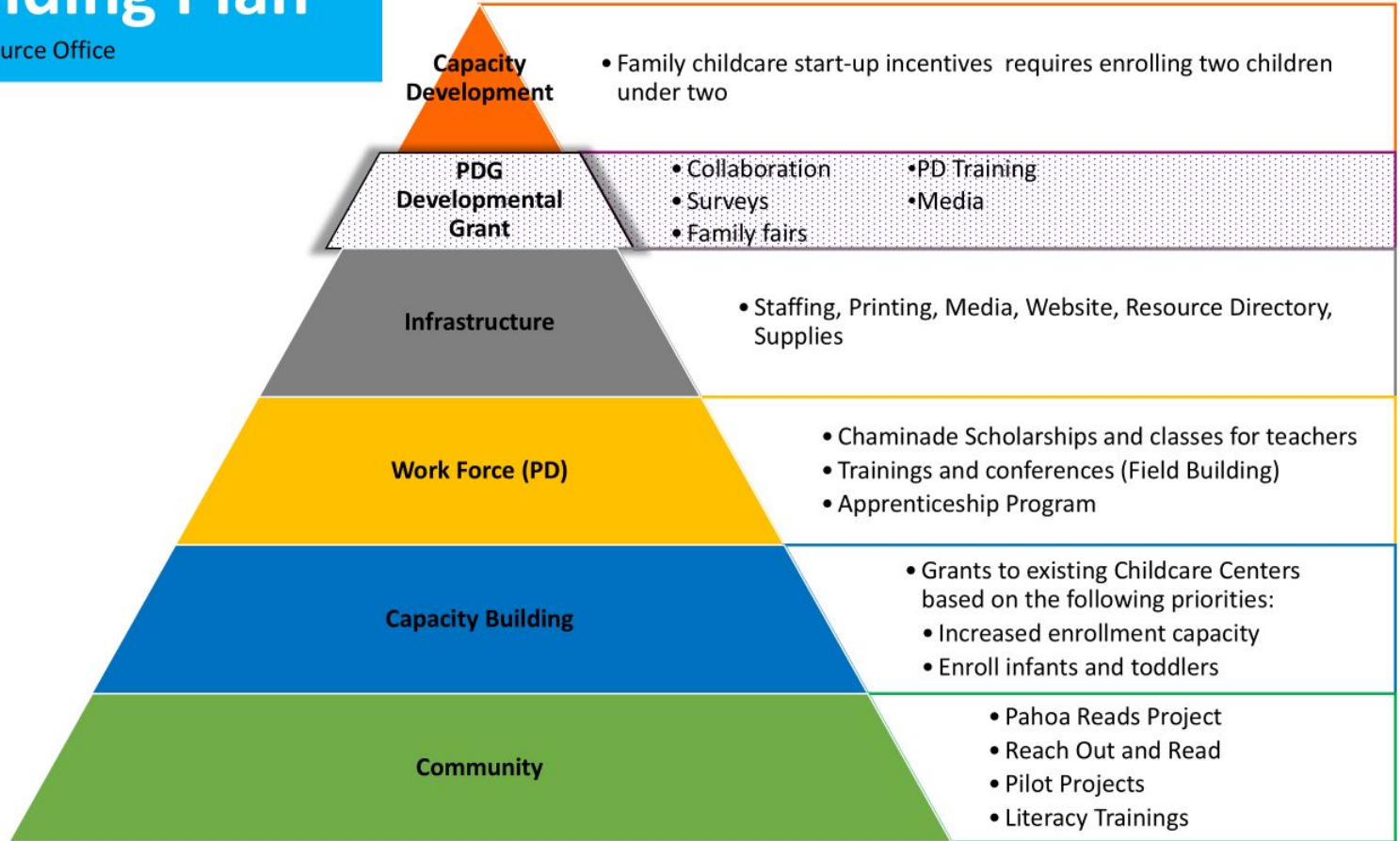
# Community Profile 2023





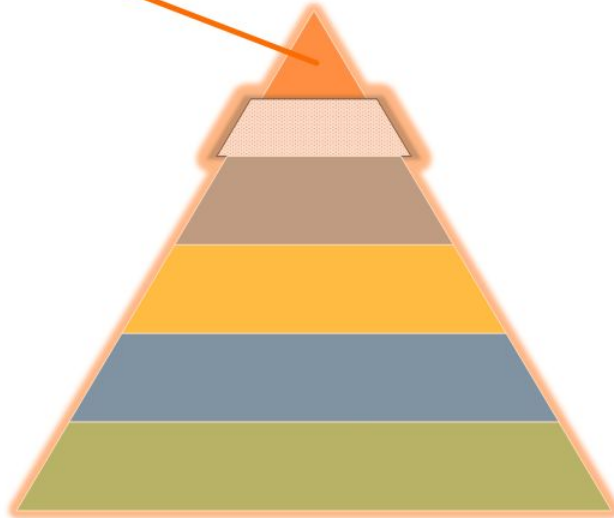
# ARPA Funding Plan

COH Early Childhood Resource Office



**Capacity  
Development**

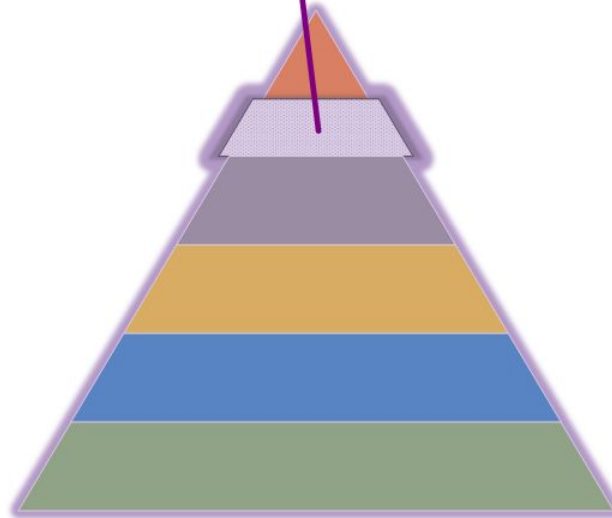
Family childcare start-up incentives  
Requires enrolling two children under two



**PDG Developmental  
Grant**

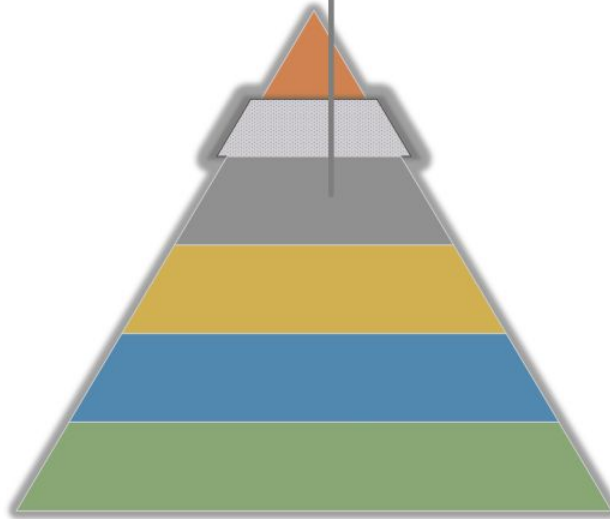
**PD Training  
Surveys  
Media  
Family fairs**

**Collaboration**



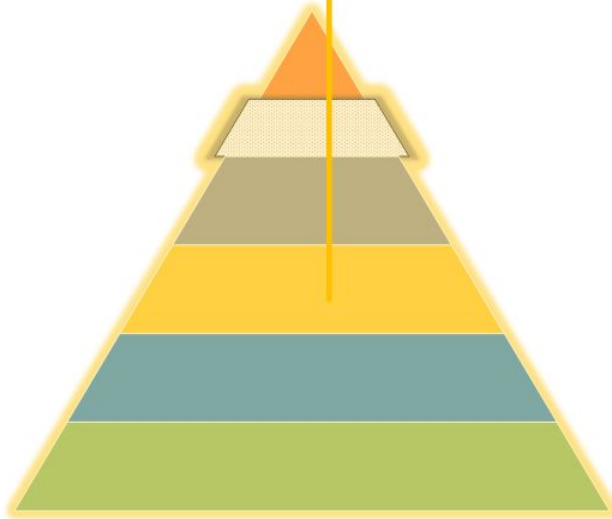
# Infrastructure

Staffing, Printing, Media, Website,  
Resource Directory, Supplies



## Work Force (PD)

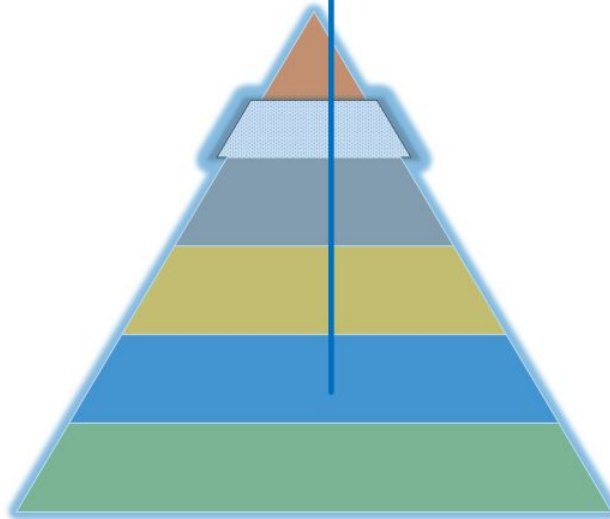
- Chaminade Scholarships and classes for teachers
  - Trainings and conferences (Field Building)
  - Apprenticeship Program



## Capacity Building

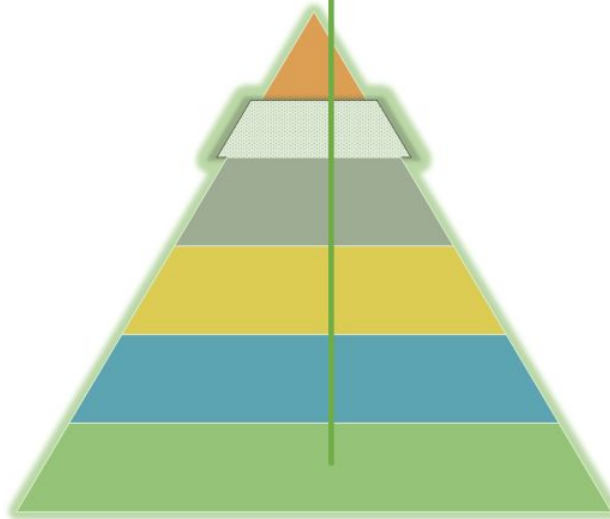
Grants to existing Childcare Centers based on the following priorities:

- Increased enrollment capacity
- Enroll infants and toddlers



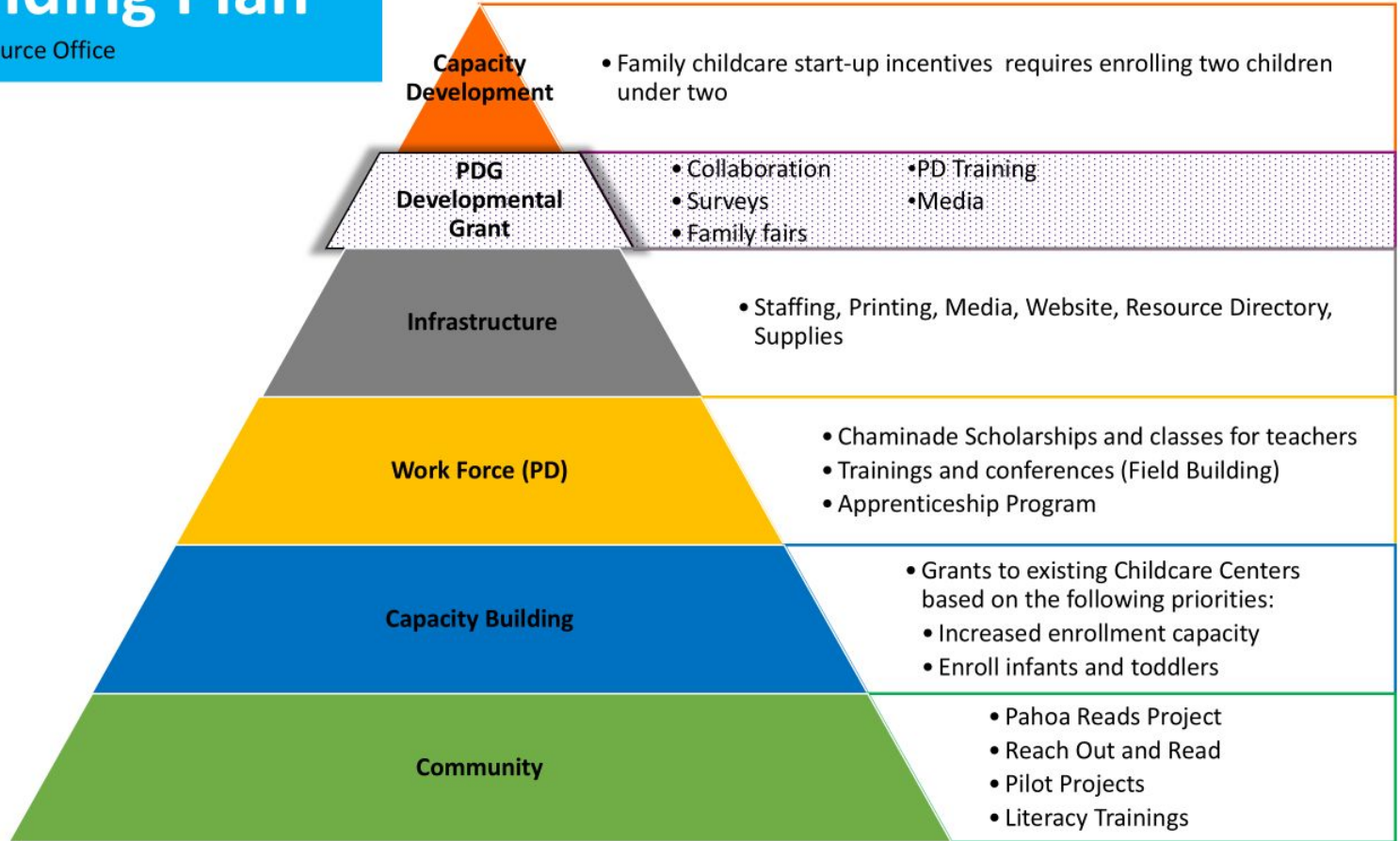
# Community

- Pahoa Reads Project
- Reach Out and Read
- Pilot Projects
- Literacy Trainings



# ARPA Funding Plan

COH Early Childhood Resource Office





# KAUAI PRIORITIES

## COUNTY OF KAUAI

- Building capacity for early childhood.
  - Renovations are in process at the Piʻikoi Building (Old Big Save space) for the County Youth Center.
- Mayor Kawakami is one of the Early Learning National Policy Fellows at The Hunt Institute, which includes 109 mayors and other elected officials nationwide.
- Mayor Kawakami continues to prioritize progressive and inclusive parks and open spaces, such as inclusive playgrounds for kupuna and children with special needs, skateparks, and the county's first public equestrian facility so that all children will have a safe space to play.
- Increasing family & community engagement through a partnership with Kauaʻi Planning & Action Alliance.

## KAUAI PLANNING & ACTION ALLIANCE

- Strategic recommendations for program expansion on Kauai using a data-based approach to increase access to child care and early learning programming for 3—and 4-year-olds.
- Supporting and uplifting early learning professionals.
  - Through conferences and other professional development opportunities. (We just held the 3rd annual ECE Conference on Kauai).
  - Engaging with early learning stakeholders and program directors to identify and address gap areas.
- Family and Community Engagement
  - Annual Parent & Child Fair - Upcoming April 5, 2025
  - Recipient of PDG B-5

# CROSS-COUNTY COLLABORATION

## 2024 HAWAII STATE ASSOCIATION OF COUNTIES (HSAC) CONFERENCE

All four county representatives for early childhood came together to share valuable insights into what each county is doing to increase investments in keiki development, increase access to quality early learning programs, and strengthen connections to community resources. The conversation touched on key challenges and highlighted:

- The critical need for more early learning opportunities.
- The Importance of reducing the costs for families.
- An emphasis on the importance of collaboration between federal, state, and local governments, alongside private partnerships, to ensure comprehensive support for children and families.



*Facilitated by Alexina Chai, Talent, Human resources, Organizational Senior Vice President at American Savings Bank, the panel discussion featured Jordana Ferreira, Early Childhood Coordinator for the City and County of Honolulu; Ka'ina Bonacorsi, Early Childhood Resource coordinator for the County of Maui; Alanna Souza, Early Childhood Education System Coordinator at the Kaua'i Planning and Action Alliance; and Douglass Adams, Director of Research Development for the County of Hawai'i.*

**MAHALO!**